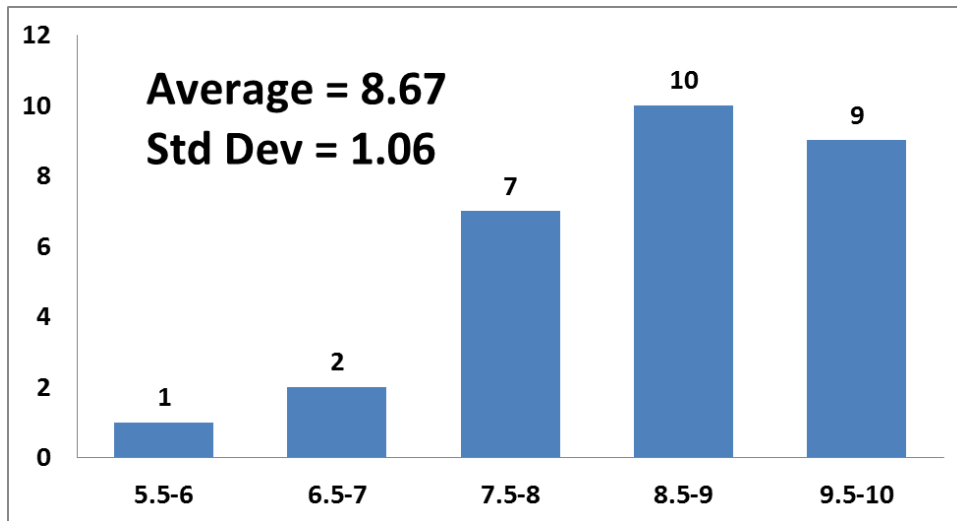


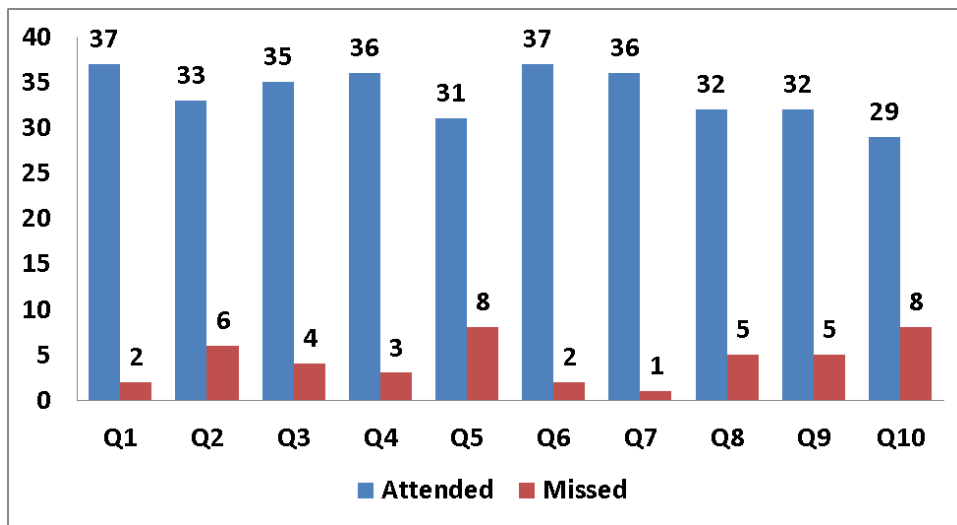
## QUIZ 10 REPORT

	Number of Students
Total	37
Attended	29
Missed	8
Make-Up	0

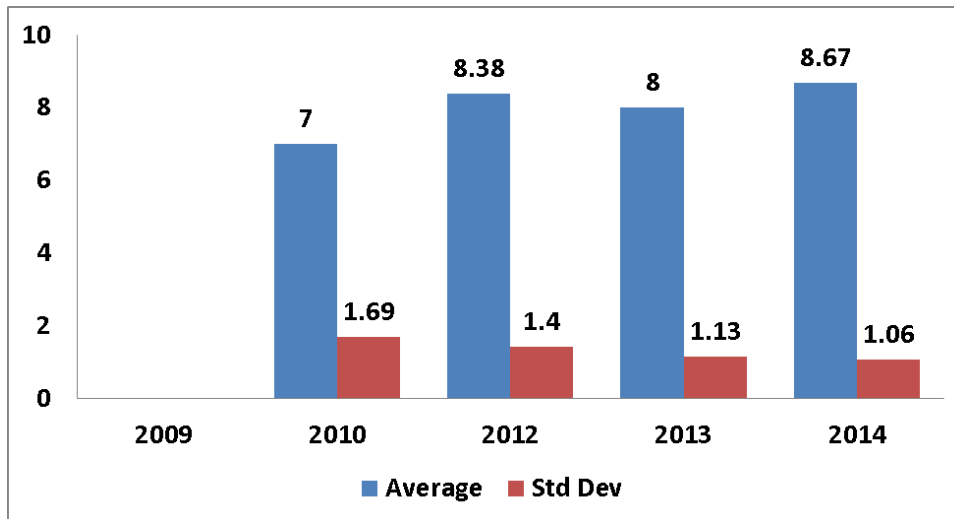
## GRADE DISTRIBUTION



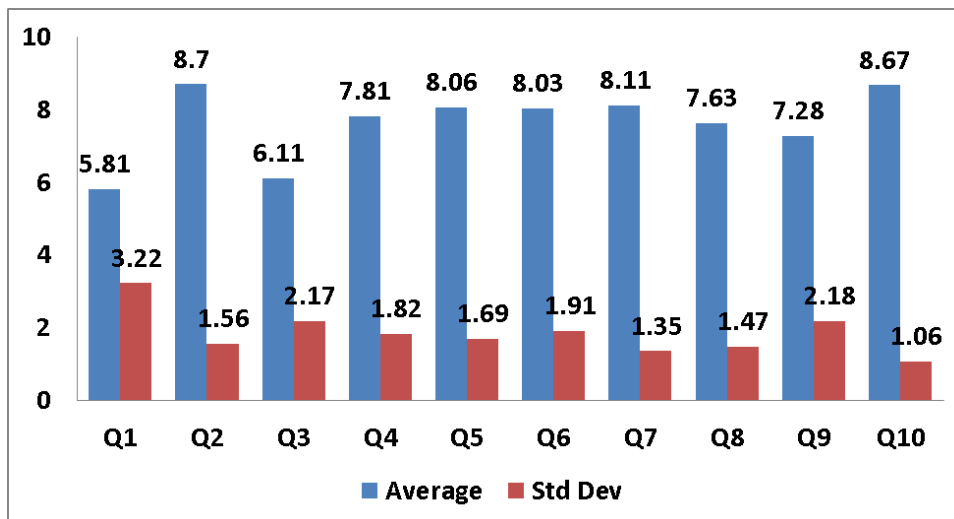
## ATTENDANCE HISTORY



### COMPARISON WITH LAST 4 YEARS



### COMPARISON OF QUIZZES 2014



## **SPECIAL COMMENTS**

- Major recurring error was in algebraic simplifications
- Nine students did not set the Reynolds number to 2000 in order to solve for the height of the water level in part c where the flow starts to transition