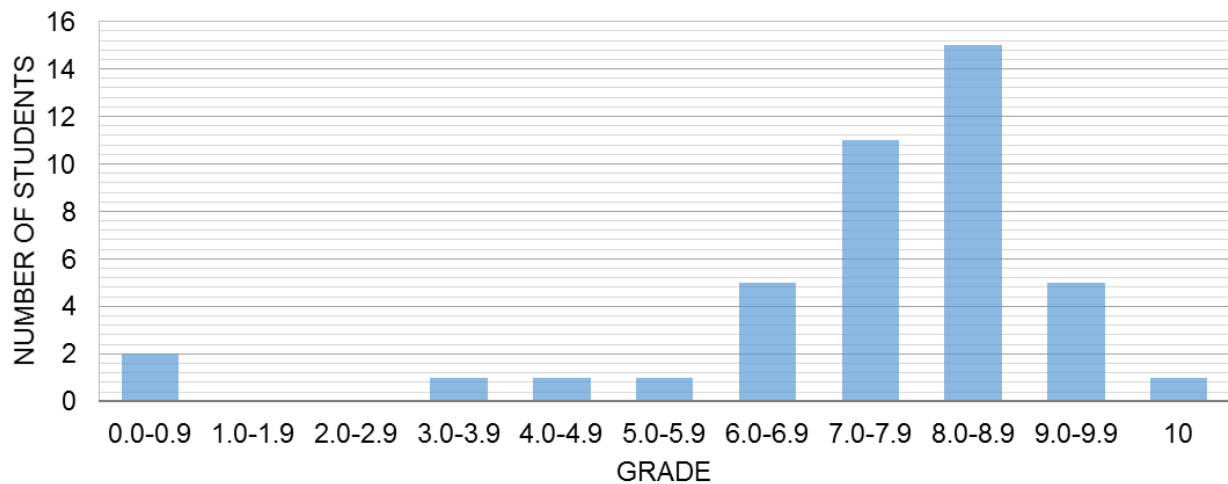


QUIZ 3 – Report

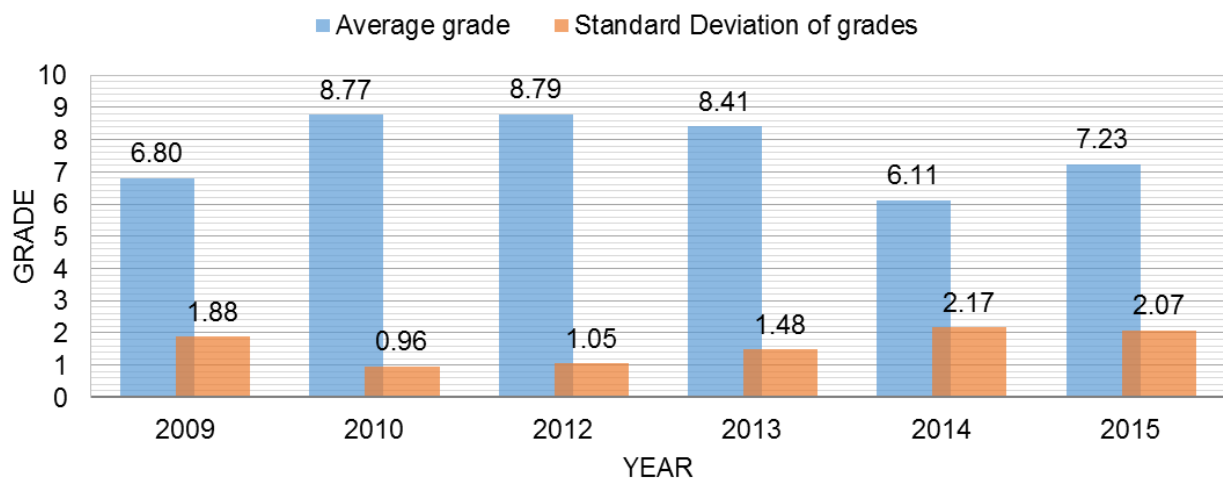
General

Total number of students	42
Attended	40
Missed	2
Average grade	7.23
Standard deviation of grades	2.07

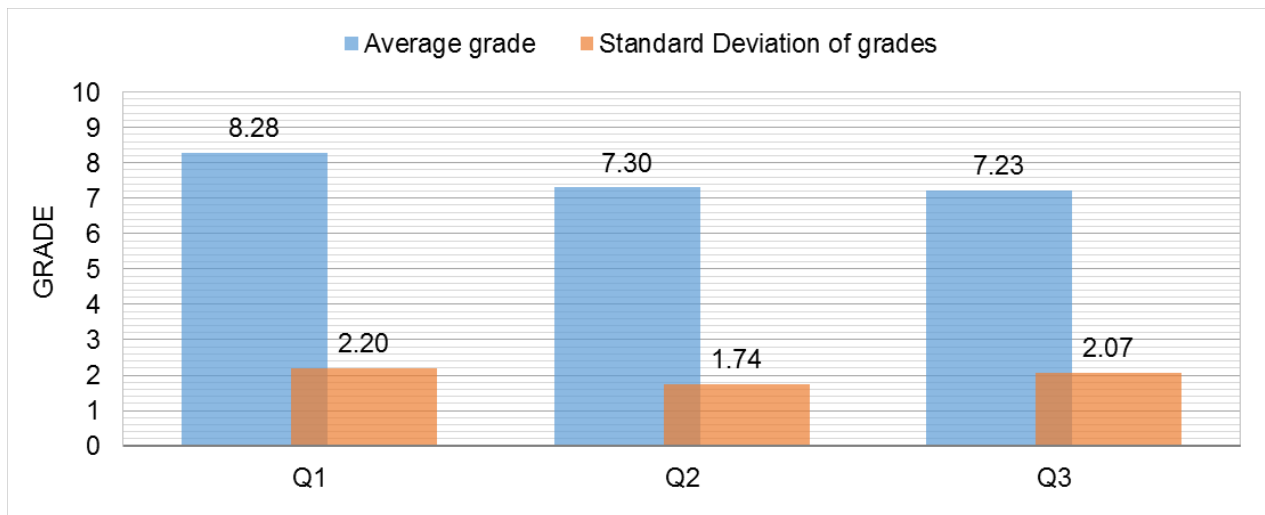
Grade distribution



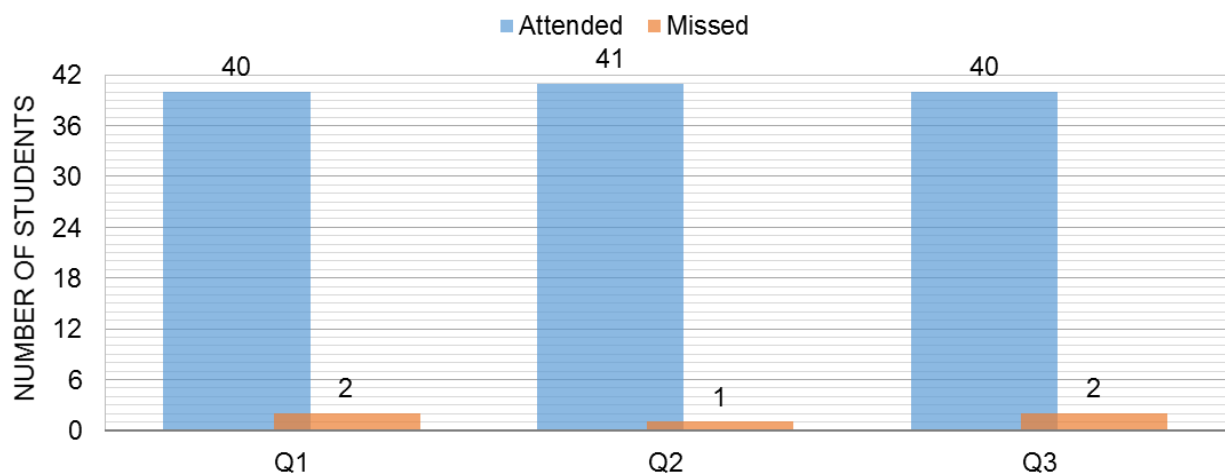
Comparison with last five years



Grade history



Attendance history



Comments

- 17.5% of students did not apply correctly the continuity equation. Some used conservation of volume flow rate (ignoring the change in density), some applied Bernoulli equation.
- 30% of students did not consider the fuel flow rate in the continuity equation.
- 12.5% of students did not consider the net force on section 1 given by P_1A_1 .
- 35% of students did consider the net force but used absolute pressure instead of gage pressure.
- 12.5% of students used one value of mass flow rate on the right hand side of momentum equation instead of

$$\dot{m}_2 V_2 - \dot{m}_1 V_1$$